

## Product List



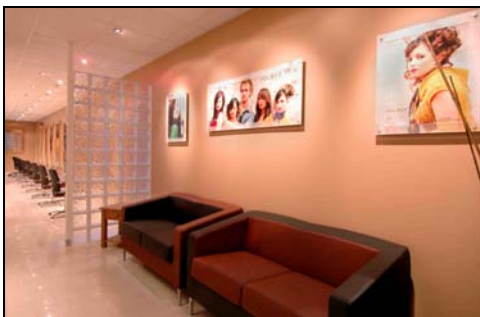
### **CHUNKY** CANVAS WALL GRAPHICS

- Modern, tactile, high quality canvases
- True photographic image quality
- Available in 40 or 60mm depths
- Can be mounted in single panels or in combination
- Sturdy, invisible fixings (kits supplied)
- Available in sizes from 300mm sq to 3 metres sq
- Full installation service available



### **Impress** DIGITAL WALL COVERINGS

- Unique and bespoke wall coverings
- High quality ink-jet print
- Available in a variety of finishes and textures
- Tough, wipe clean surface
- Antimicrobial bio treatment for bacterial resistance
- Suitable for contract interiors with moderate traffic
- Fire rated to Class 0 & 1 (BS 476)
- Full survey and installation service available



### **VISION** acrylics

- Contemporary graphic displays
- True photographic print quality
- 'Floating-fix' gives 3-dimensional effect
- Choice of sturdy aluminum fixing pegs
- Drill fixed for permanence and security
- Available in sizes from A3 to 1200 x 3000 mm sq
- Full installation service available



- Eco-friendly graphic displays
- True photographic print quality
- Available in a choice of thicknesses
- Made from recycled and biodegradable materials
- Raised or flush invisible fixings
- Tough laminated surface in a variety of finishes
- Fire rated to Class 1 (BS 476)
- Available in sizes from A3 to 3000 x 1200 mm sq
- Full installation service available



- Low energy light box displays
- Pin-sharp graphic quality
- Free-standing or wall-fixed
- Clip system allows for easy replacement of graphics
- High-impact acrylic screens for optimum durability
- Slim-line profiles are attractive and space-saving
- Plug or mains wired
- Available in sizes from A2 to 1500 x 1000 mm sq
- Full electrical installation service available



- Magnetic display graphics
- High quality graphics printed directly onto PVC
- Free-standing or wall-fixed
- Does not crease, wrinkle or tear
- Replacement graphics fitted in seconds - no tools required
- Easy and inexpensive to distribute new graphics
- Any size available
- Full survey and installation service available



## reveal

printed window blinds

- Bespoke, printed window blinds
- High quality ink-jet print with fade-resistant UV inks
- Light control (anti-glare, dim-out or blackout)
- Choice of textures and fabrics
- Sturdy aluminum ratchet and clutch mechanisms
- High durability, perfectly suited to office environments
- Fire rated to Class 1 (BS 476)
- Available to fit any window size
- Full survey and installation service available



## Clarity

transparent window treatments

- Optically clear window graphics
- High quality 'dot-less' print
- Can be applied to any glazing (window or partition)
- Applied to inside of glazing (can be cleaned on inside)
- Can also be used to control light transmission
- Absolute clarity without fogging
- Produced to exact size for a perfect fit
- Full survey and installation service available



## Hide

One-Way Vision System

- One way vision for glass and perspex
- High quality printing up to 1200dpi
- Graphics imaging technology makes Hide fade resistant
- Requires little cleaning or maintenance
- Appears as an opaque graphic looking in and a tinted window looking out
- Available in single sheets up to 3 x 2 metres, or in seamless multi-sections
- Full design, survey and installation service available



## heal+

impact absorbing graphics

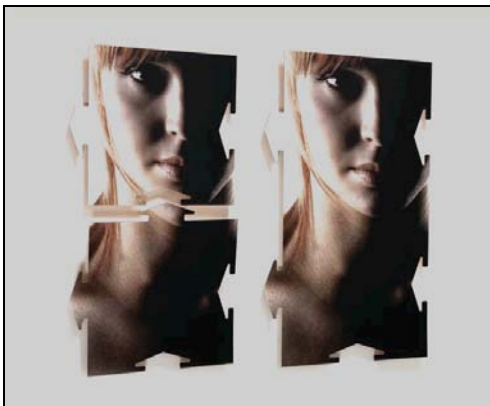
- Cushioned wall graphics
- True photographic print quality
- Impact absorbing neoprene layer
- Flexible polycarbonate layer protects and preserves
- High bond adhesive adheres permanently to any surface
- Can be mounted singly or tiled
- Can be applied to irregular shapes
- Fire rated to Class 1 (BS 476)
- Available in single panels up to 3000 x 1200mm
- Full survey and installation service available



## SUPER-G

MULTI-SECTION GRAPHICS

- Multi-tile graphic system
- True photographic quality
- Lightweight and durable in a choice of finishes
- Simple 'peel-and-go' adhesive system
- Pantone edge colouring system ensures perfect joins
- Minimum 10 year life on internal applications
- Moisture resist treatment for damp environments
- Fire Rated to Class 1 (BS 476)
- Available in sizes of up to 1200x2400mm
- Full survey and installation service available



## clip

- Easy to assemble wall mounted graphics
- High quality ink-jet print
- Suitable for interior or exterior use
- Invisijoin™ computer cutting gives seamless results
- Lightweight - inexpensive to distribute and easy to store
- Adheres to almost any wall surface
- Choice of permanent, temporary or exterior adhesive
- Can be made to any size and format
- Full survey and installation service available



- Cushioned graphic flooring system
- 600 dpi graphics that will not scuff, fade or degrade
- Highly durable flooring material
- FOOTGENTLE™ rubberised backing provides comfort
- Non-slip, crystal finish is fully compliant with all relevant Health & Safety regulations
- Fits any single or multi-section area
- Full survey and installation service available



- Interior graphics within the fabric of a building
- High quality, silk screen graphics
- Suitable for most flat, clean substrates
- Unique, 'frame-grip' system
- Two-pack epoxy inks give a life of 10 years plus
- Pre-mix system ensures accurate colour matching
- Unlimited number of colours including 4-colour process
- Clean and virtually odour-free
- Suitable for fixed or fragile structures
- Full survey and installation service available



- Bespoke 'high impact' graphic partitioning
- Tough, laminated high quality graphics
- Create partitioned areas quickly and cost effectively
- Fully configurable to suit changing requirements
- High-grade anodized aluminum units
- Sound-deadening materials provide total enclosure
- Suitable for high traffic environments
- Fire rated to Class 1 (BS 476)
- Available in a range of sizes and formats
- Full lighting systems available



accent<sup>™</sup>  
3 D signage ○○○●

- 3D signage system
- PVC vinyls, acrylics, timbers, laminates, alloys and metals
- Up to 60mm thick
- Full PANTONE and RAL colours matching system
- 'Flush-fixed' or 'peg-fixed' for maximum impact
- Industry standard CAD cutting facilities
- Produced to required size
- Full installation service available



vault:<sup>™</sup>  
indestructible graphic displays ○○○●

- Hard wearing graphic displays
- True photographic print quality
- UV and fade resistant inks
- Aluminium composite substrate for structural rigidity
- Epoxy resin sealed and coated edges
- Highly durable, permanent fixings
- Mounted using optically clear adhesive (perfect image)
- Available in a range of sizes
- Full survey and installation service available